



MAUSOLEUM

DESIGN &

INNOVATION

100114.2

**welters**<sup>®</sup>  
ORGANISATION  
WORLDWIDE  
Design and Innovation  
**Government** WORLD™



## ***Majestic Community Mausolea***

Introducing exciting new mausolea  
interment opportunities

Each **welters**® Majestic Community Mausolea provides 48 full body interment spaces as well as niches for cremated remains interments.



**welters**®  
ORGANISATION  
WORLDWIDE  
Design and Innovation



## ***Majestic Community Mausolea***

Each mausolea provides 12 full body side charging interments and 36 full body front charging interments.

Both types of interment include large granite front tablets for memorial inscription and ornamentation purposes.

Coffin/casket is bricked up after interment and the granite tablet fitted.



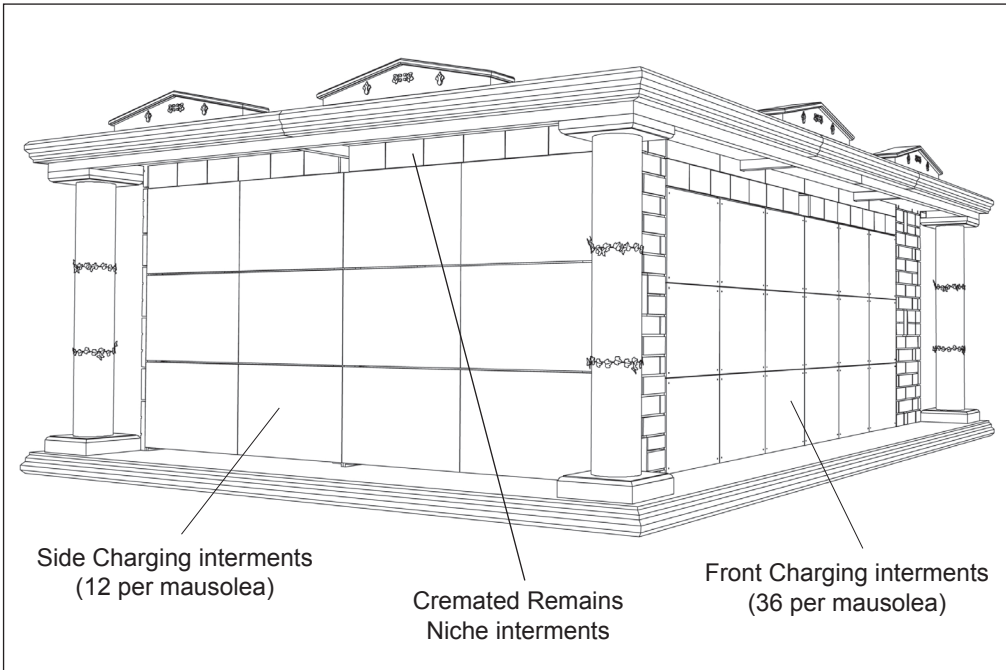
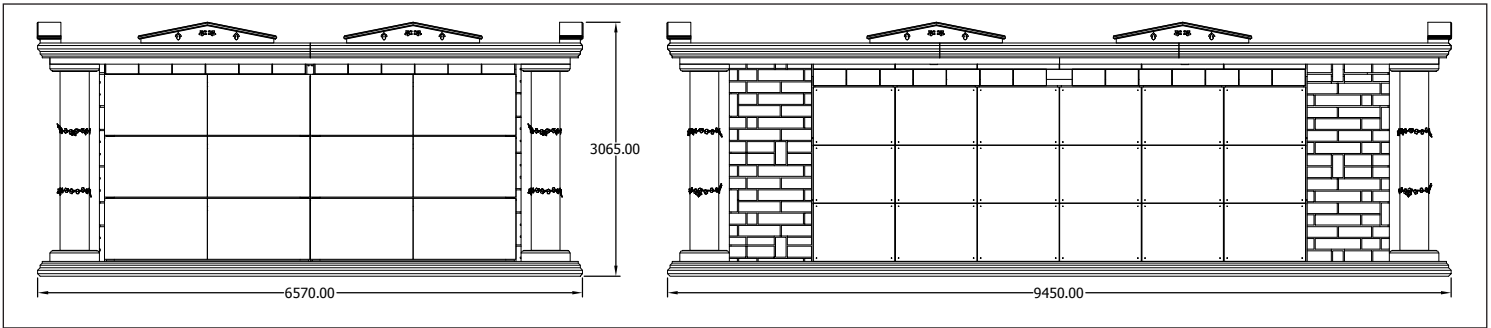


## ***Majestic Community Mausolea***

Stainless steel decorative features enhance the aesthetic presence of the mausolea. The corner features pictured below facilitate rainwater run off.

A granite centre feature with decorative stainless steel branches provides additional memorialisation and floral tribute opportunities.

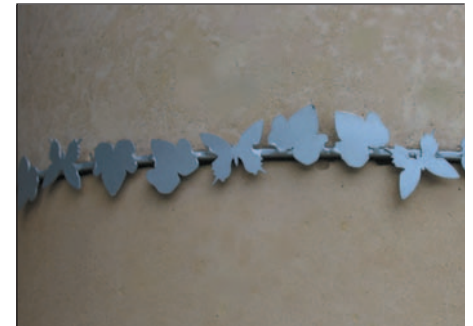


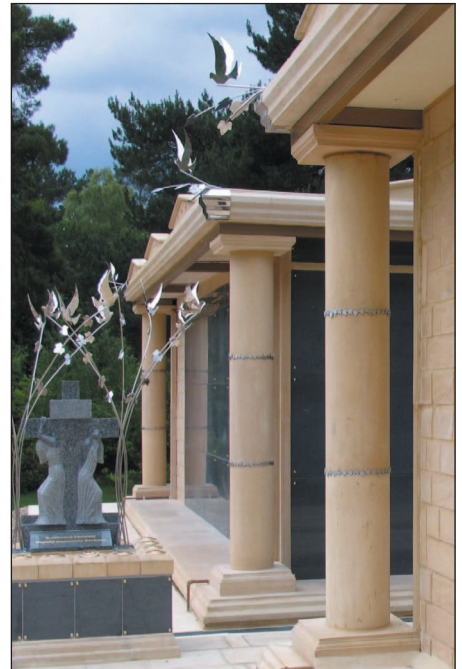
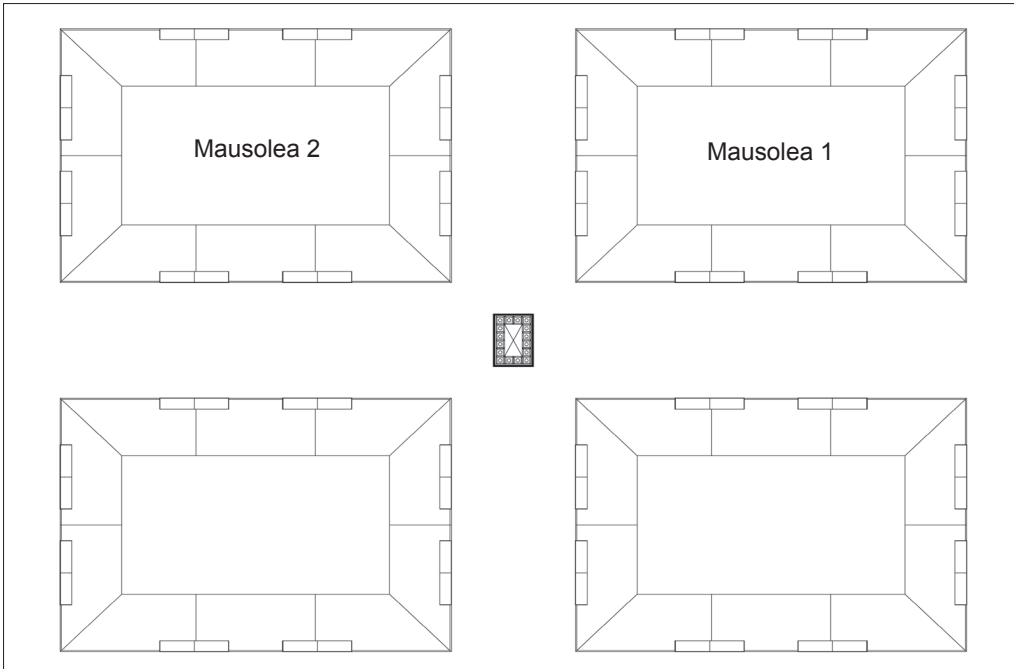


### ***The Majestic Community Mausolea***

The line drawings show the main external dimensions of one mausolea building. Dimensions shown are in mm.

The four decorative limestone columns are fitted with attractive stainless steel as shown in the image below.





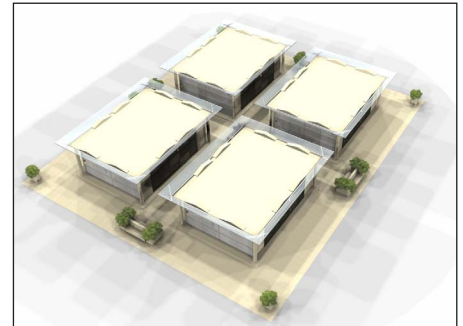
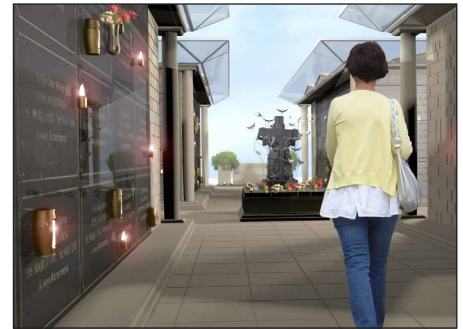


***The Majestic Community Mausolea Images***

As part of our design process a number of different design options were presented to the client for consideration.



These images show an awning style roof system.



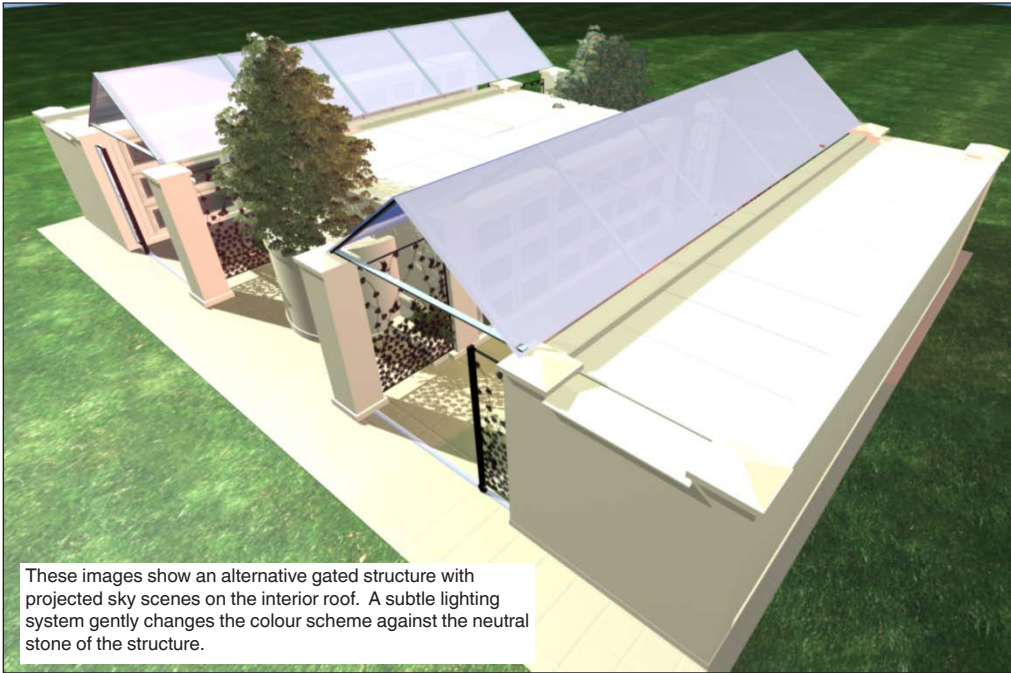


As part of our design process a number of different design options were presented to the client for consideration.

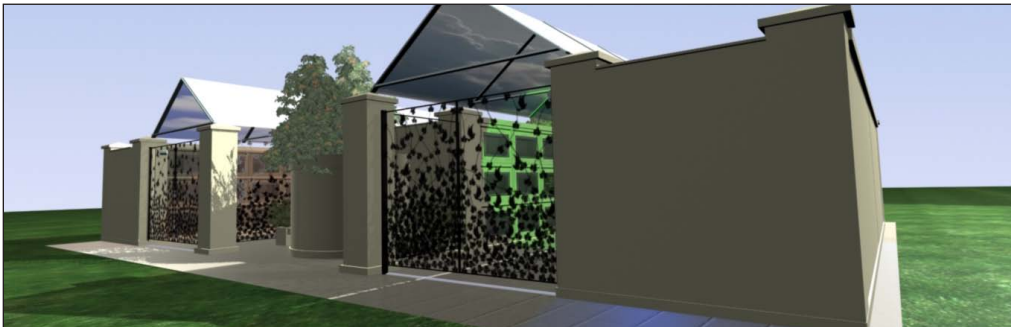
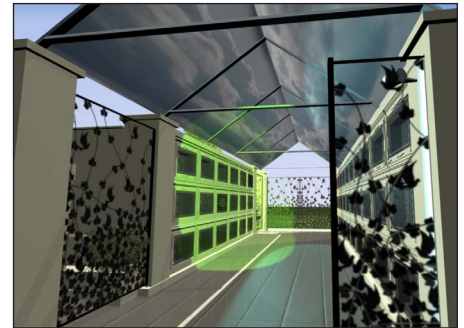
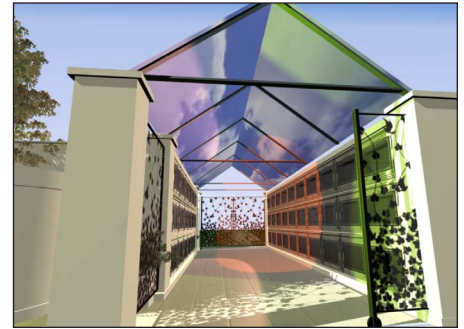


These images show an awning style roof system with covered central walkways.



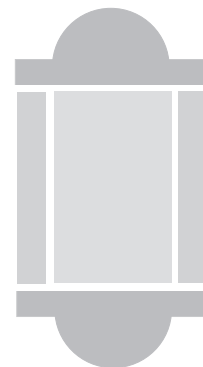


These images show an alternative gated structure with projected sky scenes on the interior roof. A subtle lighting system gently changes the colour scheme against the neutral stone of the structure.



**welters**<sup>®</sup>  
ORGANISATION  
WORLDWIDE  
Design and Innovation

**Classic Art range of  
family and communal  
mausoleum and cremated  
remains designs**





## **Classic Art Majestic Family Cremated Remains Mausoleum**

The Classic Art Majestic can accept up to four cremated remains caskets.

The housing has columned detailing and a the domed pediment is available in a number of variations.

The mausoleum is supplied with a front planting frame for management of floral tributes and side spacing blocks when placed in row formations.





Design A

Classically elegant design for six below ground interments



Design B

Chapel style mausoleum for six above ground interments



Design C

A modern classic design prayer chapel with integrated solar lighting

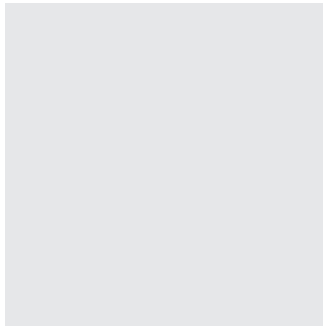
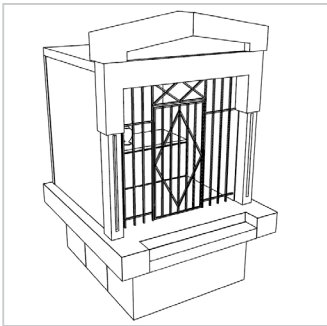
## Classic Art Family Mausolea

**welters®** have a long tradition of designing innovative and meaningful facilities for the bereaved.

We pride ourselves on introducing industry leading products and services to both private and public arenas and the mausolea presented in this brochure are a continuation of that ethos.

Three emotive designs for the purpose of family interment and commemoration.

Each design is a bespoke product, materials and specifications can be altered to suit the client to produce an intimate environment and architectural excellence.



## Design A

Access into the mausoleum is by a single gated entrance.

There is a granite clad altar at the rear of the structure which can be used for tributes and commemorations. An optional keepsake unit can be installed into the altar if desired.

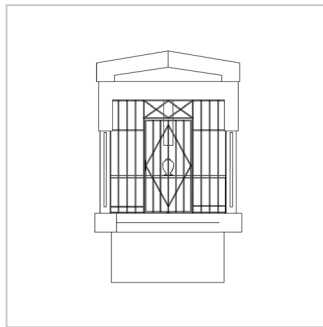
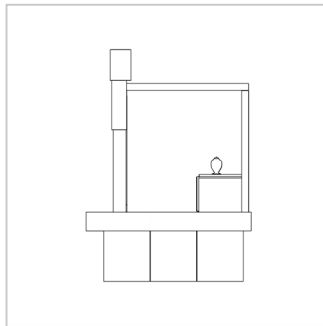
Above the altar is a single stained glass window.

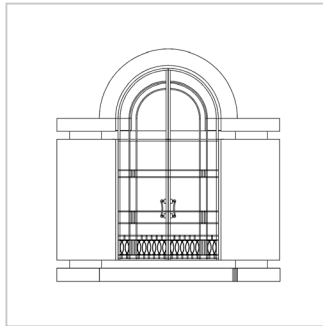
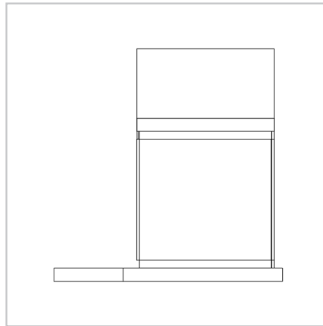
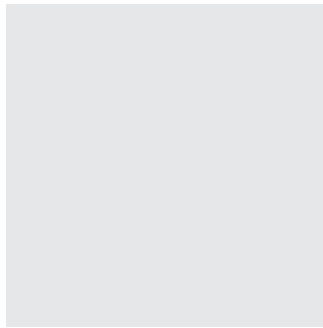
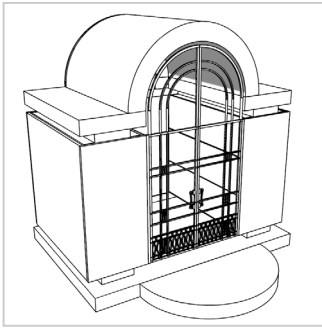
Below the mausoleum are three interment vaults.

Each vault can accept two interments.

Interments into the front and rear vaults are accessed by the central vault.

The central vault is designed to be used for interments once the front and rear vaults are fully interred.





The mausoleum has a tall arch double gated front entrance.

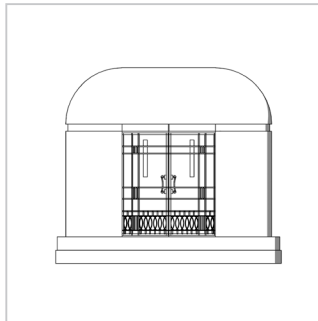
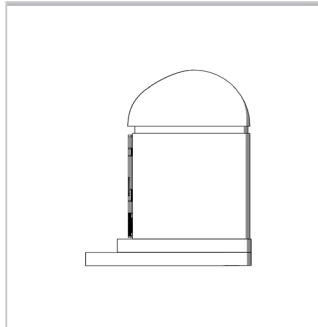
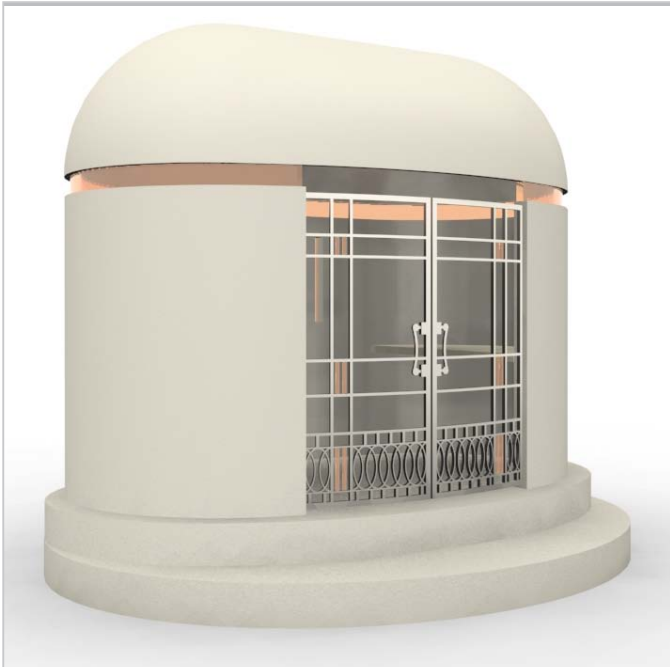
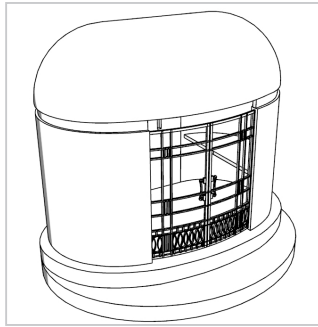
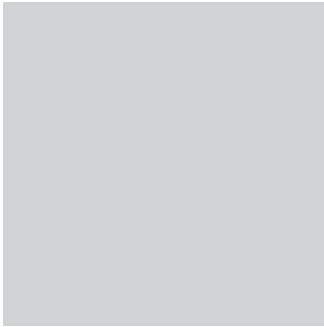
The arch of the gates is continued along the span of the roof.

On the rear wall is a stained glass arched window.

There are three single interment vaults on each side of the mausoleum.

Each vault has a large granite front for inscription purposes.

The large granite front is removed at the time of interment to gain access to the vault.



## Design C

The mausoleum is ovoid in shape and has a double gated entrance.

There are three narrow stained glass windows on the rear wall.

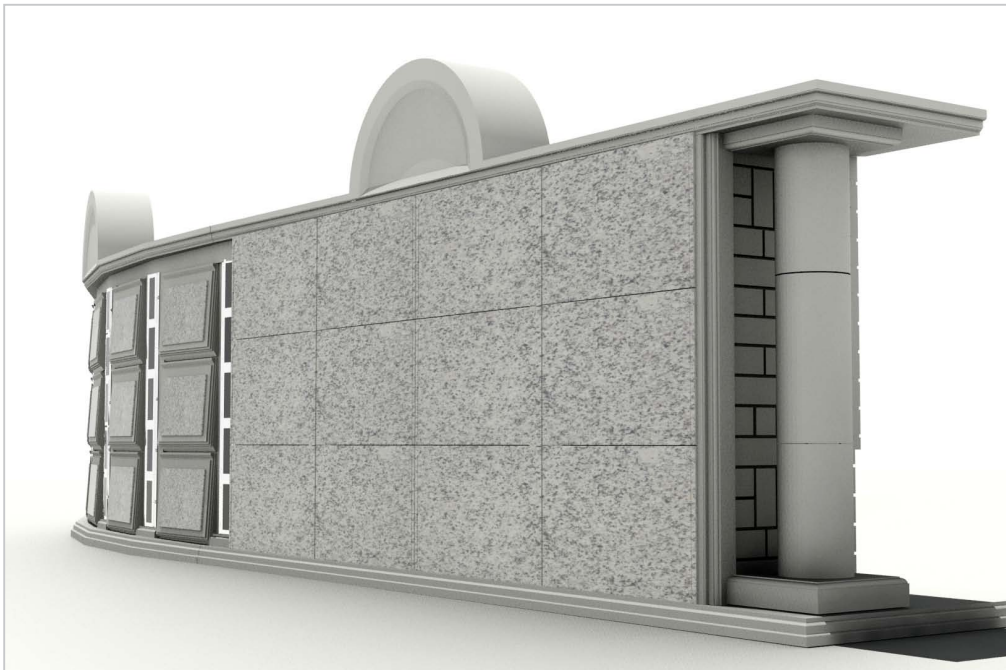
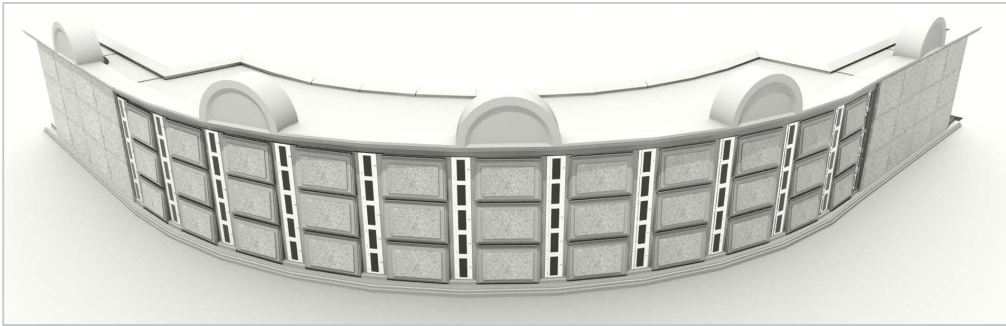
There are two altars situated left and right within the structure for tributes and commemorations.

The roof sits on a translucent collar which can be illuminated using an LED solar lighting system.

The lighting system can be programmed to gently cycle through a range of colours and sequences which will emanate within the interior of the building.

The building is designed primarily as a prayer room but provision can be made for below ground vaults if required.





## Classic Art Communal Mausoleum

The columned Classic Art communal mausoleum provides side charging and front charging opportunities within the same structure.

The versatility of the design allows for straight or curved construction in a range of configurations and cell quantities to maximise use of space.

The front charging interment cells are separated by glass-fronted niches which can be used for cremated remains interment or as a keepsake niche.



Classic Art Communal Coliseum as part of a multi tiered Cemetery Village scheme





Classic Art Communal Coliseum Cemetery  
Village grave reuse scheme



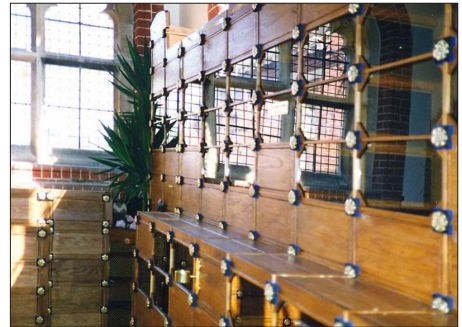
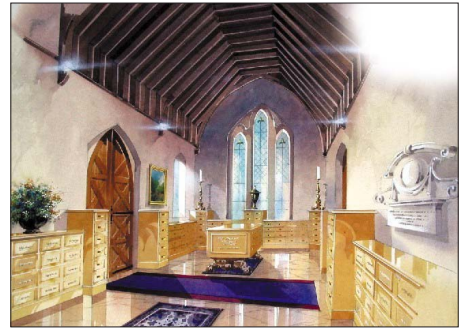


Large scale communal mausoleum Cemetery  
Village grave reuse scheme





This disused chapel was renovated to include solid oak niche cabinets for cremated remains



**welters**<sup>®</sup>  
ORGANISATION  
WORLDWIDE  
**Design and Innovation**

PO Box 159, Carlisle, Great Britain, CA2 5BG

Sales Tel: 08702 418 240  
Admin Tel: 08702 416 422  
Fax: 01228 674 959

General Enquiries:  
[admin@welters-worldwide.com](mailto:admin@welters-worldwide.com)  
[procurement@welters-worldwide.com](mailto:procurement@welters-worldwide.com)